



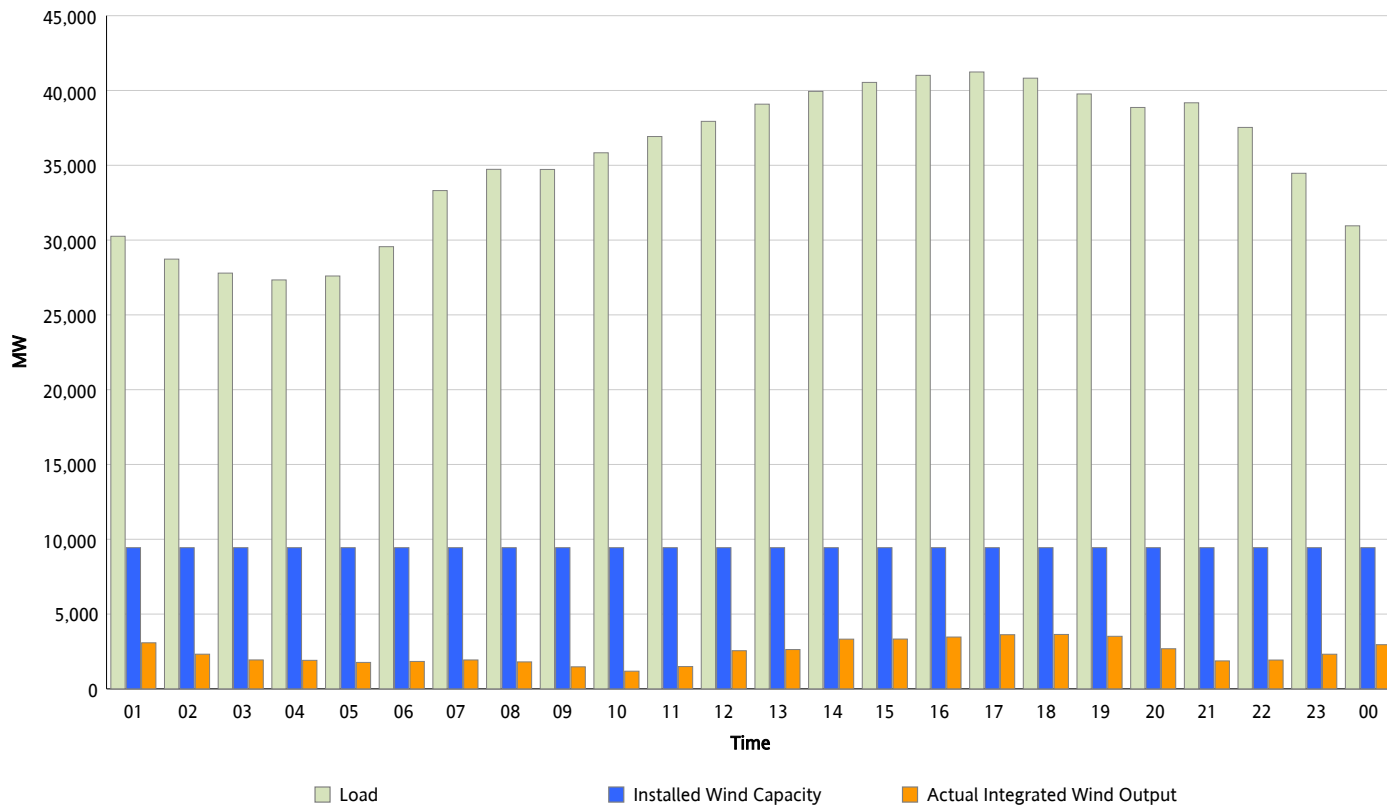
ERCOT Grid Operations

Wind Integration Report : 04/03/2012

Peak Load	41,238 MW
Load Peak Hour (HE)	17
Wind Over Peak	3,621 MW
Wind Record 03/18/12	7,917 MW
Max Wind Value*	3,784 MW
Wind Peak Time	17:00
Wind Integration %	9.19 %

Hourly Average Actual Load vs. Actual Wind Output

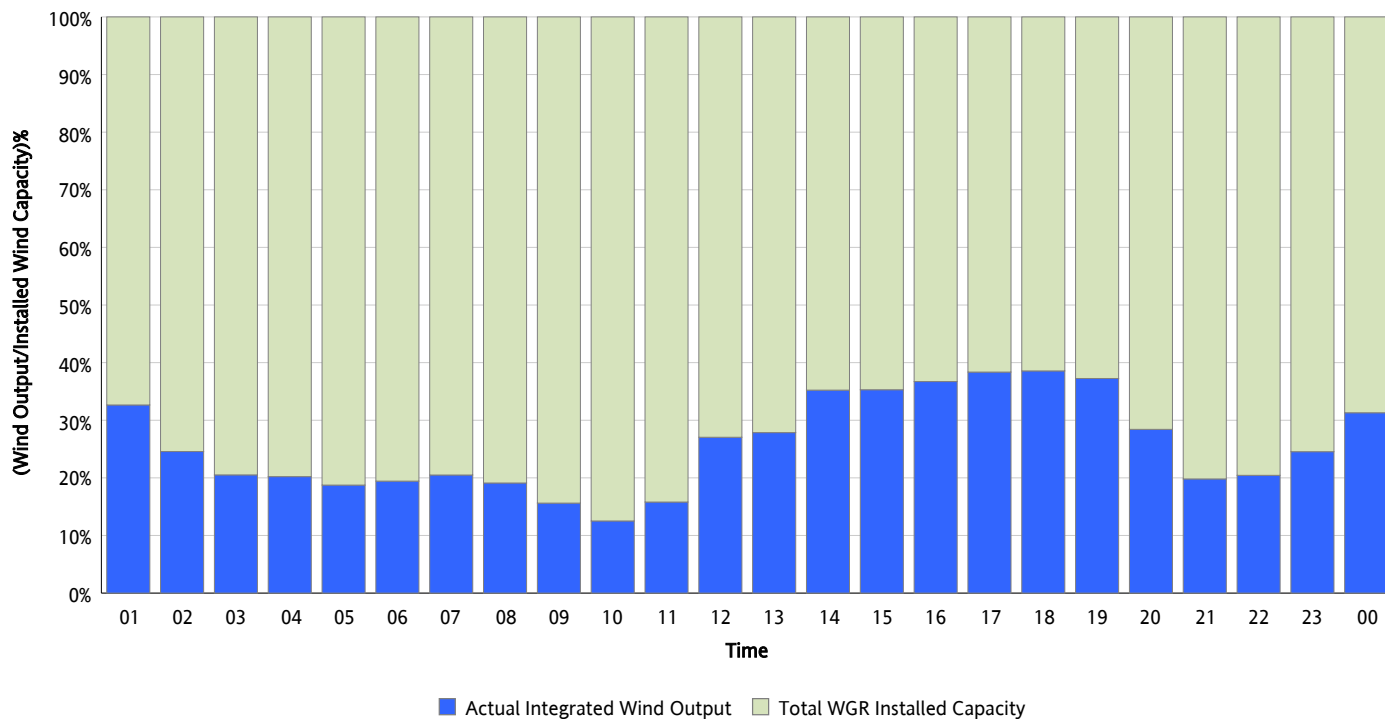
04/03/2012



* Wind Record and Wind Max represent instantaneous values and the rest of the values are integrated over the hour

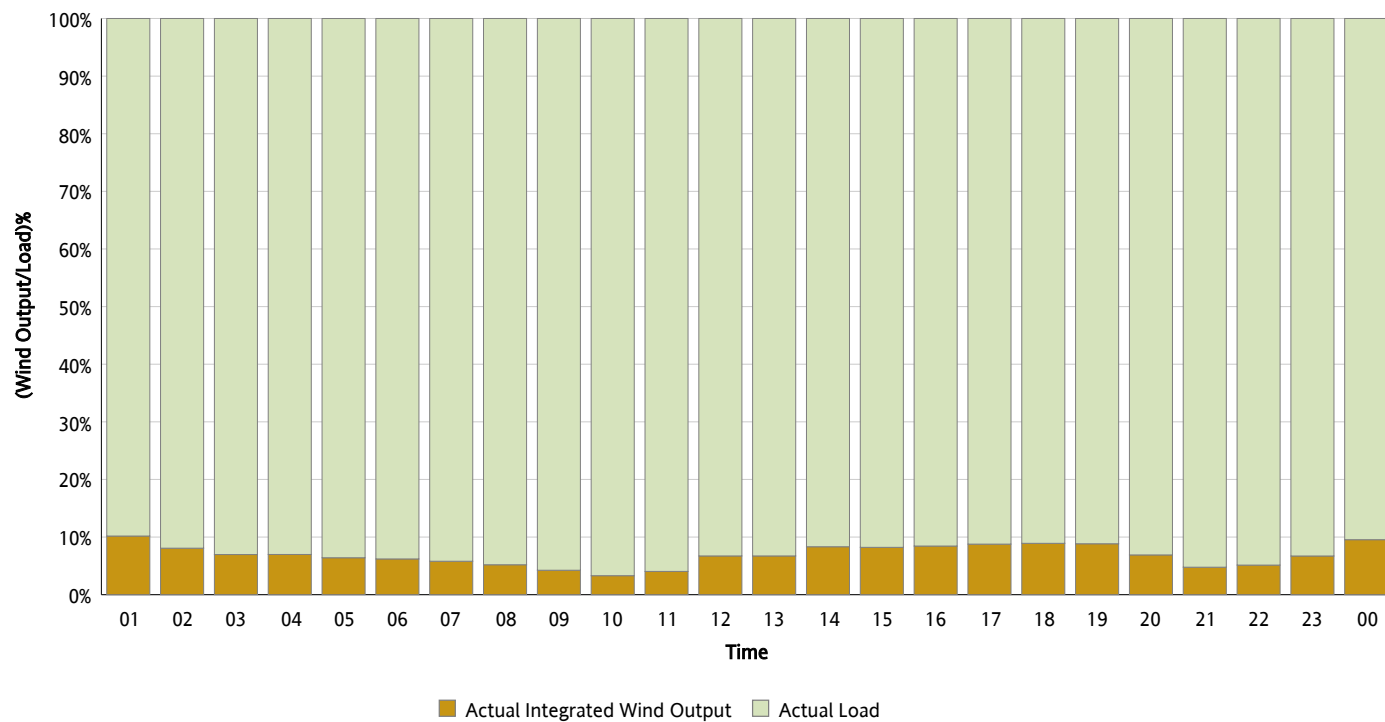
Actual Wind Output as a Percentage of the Total Installed Wind Capacity

04/03/2012



Actual Wind Output as a Percentage of the ERCOT Load

04/03/2012



ERCOT Load vs. Actual Wind Output

03/27/2012 - 04/03/2012

